

# SDP-E300/TA-VE100

## SERVICE MANUAL

*AEP Model*  
*UK Model*  
SDP-E300/TA-VE100

*E Model*  
*Australian Model*  
SDP-E300

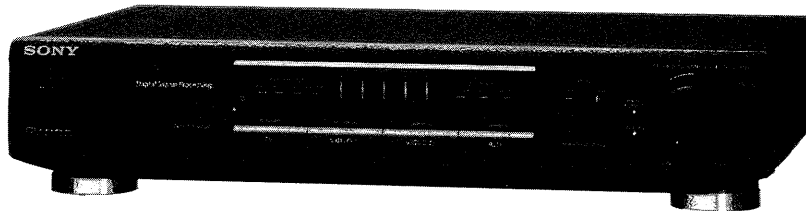


Photo : TA-VE100

### SPECIFICATIONS

#### SDP-E300

##### Amplifier section

###### Power output

**Surround mode** (DIN 1 kHz)  
Centre:  
40 W/8 ohms  
(only in the PRO LOGIC  
and THEATER modes)  
Rear:  
20 W + 20 W/8 ohms

**Frequency response** VIDEO 1 + 2, TV, LINE:  
20 Hz - 20 kHz  $\pm 2$  dB

##### Audio section

###### Inputs

	Sensitivity	Impedance
VIDEO 1, VIDEO 2, TV, LINE	150 mV	50 kilohms

###### Outputs

VIDEO 1 REC:  
Voltage 150 mV,  
Impedance 470 ohms  
FRONT, CENTER, REAR,  
MIX:  
Voltage: 1 V  
Impedance: 1 kilohms

**BASS BOOST** +7 dB at 60 Hz

##### Video section

**Inputs** VIDEO 1, VIDEO 2,  
TV, LINE:  
1 Vp-p 75 ohms

**Outputs** VIDEO 1 REC,  
VIDEO MONITOR:  
1 Vp-p 75 ohms

##### General

**Power** AEP, UK, German model :  
220-230V AC, 50/60Hz  
Australian model :  
240V AC, 50Hz

##### requirements

**Power consumption** 90 W

**Dimensions** 430 x 95 x 280 mm  
(17 x 3<sup>3</sup>/<sub>4</sub> x 11<sup>1</sup>/<sub>8</sub> in)

**Mass (Approx.)** 4.6 kg  
(10 lb 2 oz)

##### Supplied accessories

Remote controller  
(remote) (1)  
Size AA (R6) batteries (2)

#### TA-VE100

##### Amplifier section

###### Power output

**Surround mode** (DIN 1 kHz)  
Front:  
25 W+25 W/8 ohms  
Centre:  
25 W/8 ohms  
(only in the PRO LOGIC  
and THEATER modes)  
Rear:  
10 W+10 W/8 ohms

**Frequency response** VIDEO 1 + 2, TV, AUX:  
20 Hz - 20 kHz  $\pm 2$  dB

##### Audio section

###### Inputs

	Sensitivity	Impedance
VIDEO 1, VIDEO 2, TV, AUX	150 mV	50 kilohms

###### Outputs

VIDEO 1 REC:  
Voltage 150 mV,  
Impedance 470 ohms  
REAR, MIX:  
Voltage: 1 V  
Impedance: 1 kilohms

— Continued on page 2 —

DIGITAL SURROUND PROCESSOR  
**SONY**<sup>®</sup>

BASS BOOST +7 dB at 60 Hz

**Video section**

**Inputs** VIDEO 1, VIDEO 2:  
1 Vp-p 75 ohms

**Outputs** VIDEO 1 REC, TV:  
1 Vp-p 75 ohms

**General**

**Power requirements** 220-230 V AC, 50/60 Hz

**Power consumption** 110 W

**Dimensions** 430 x 95 x 280 mm  
(17 x 3 3/4 x 11 1/8 inches)

**Mass (Approx.)** 4.6 kg  
(10 lb 2 oz)

**Supplied accessories** Remote controller  
(remote) (1)  
Size AA (R6) batteries (2)

Design and specifications are subject to change without notice.

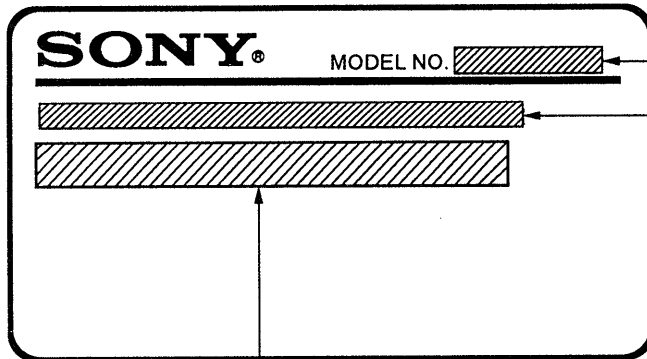
**TABLE OF CONTENTS**

Section	Title	Page
1. GENERAL	.....	3
2. EXPLANATION OF IC TERMINALS	.....	5
3. DIAGRAMS		
3-1. Printed Wiring Boards	.....	8
3-2. Schematic Diagram	.....	13
3-3. IC Block Diagrams	.....	18
4. EXPLODED VIEWS		
4-1. Front Panel Section	.....	20
4-2. Chassis Section	.....	21
5. ELECTRICAL PARTS LIST	.....	22

**SAFETY-RELATED COMPONENT WARNING!!**

COMPONENTS IDENTIFIED BY MARK  $\Delta$  OR DOTTED LINE WITH MARK  $\Delta$  ON THE SCHEMATIC DIAGRAMS AND IN THE PARTS LIST ARE CRITICAL TO SAFE OPERATION. REPLACE THESE COMPONENTS WITH SONY PARTS WHOSE PART NUMBERS APPEAR AS SHOWN IN THIS MANUAL OR IN SUPPLEMENTS PUBLISHED BY SONY.

**MODEL IDENTIFICATION**  
(Specification Label)



SDP-E300  
TA-VE100

SDP-E300 : DIGITAL SURROUND  
PROCESSOR  
TA-VE100 : STEREO AV AMPLIFIER

AEP, UK, German model : AC 220-230V~50/60Hz  
Australian model : AC240V~50Hz

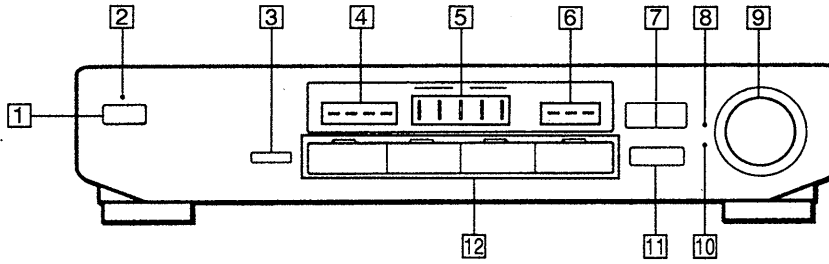
● For detailed EA, SP model of refer to AEP model.

## SECTION 1 GENERAL

This section is extracted from instruction manual.

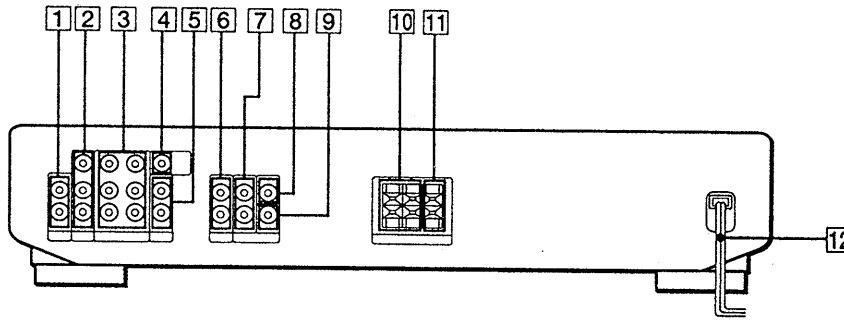
### LOCATION AND FUNCTION OF CONTROLS

#### Front Panel



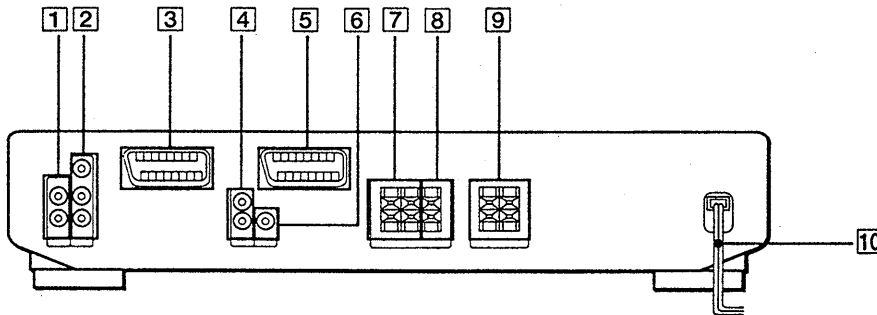
- |                         |                         |
|-------------------------|-------------------------|
| 1 POWER switch          | 7 EFFECT +, - buttons   |
| 2 STANDBY indicator     | 8 BASS BOOST indicator  |
| 3 CENTER MODE button    | 9 VOLUME control        |
| 4 CENTER MODE indicator | 10 MUTING indicator     |
| 5 LEVEL indicator       | 11 SURROUND MODE button |
| 6 SURROUND indicator    | 12 FUNCTION buttons     |

#### SDP-E300 Rear Panel



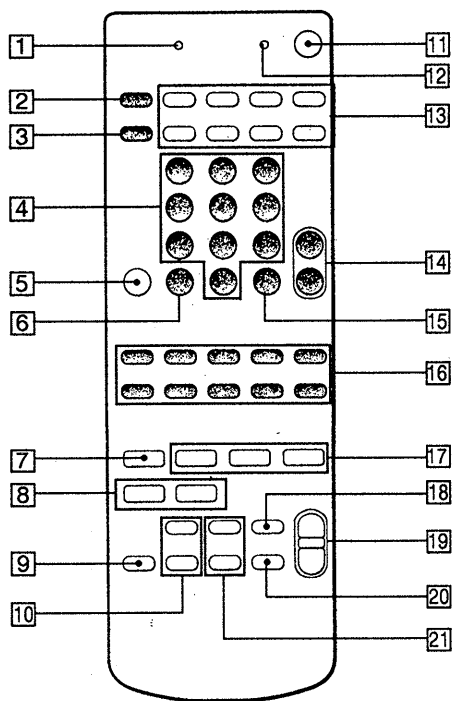
- |                   |                       |                     |
|-------------------|-----------------------|---------------------|
| 1 LINE (AUDIO) IN | 5 TV (AUDIO) IN       | 9 SURROUND MIX out  |
| 2 VIDEO 2 IN      | 6 FRONT OUT           | 10 SPEAKERS (REAR)  |
| 3 VIDEO 1 IN/OUT  | 7 SURROUND REAR out   | 11 SPEAKER (CENTER) |
| 4 MONITOR OUT     | 8 SURROUND CENTER out | 12 mains lead       |

#### TA-VE100 Rear Panel



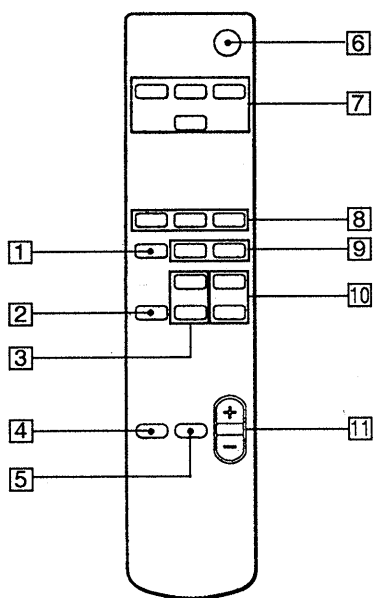
- |  |  |                    |
|--|--|--------------------|
| 1 AUX IN   | 4 SURROUND REAR out                                      | 7 SPEAKERS (REAR)  |
| 2 VIDEO 2 IN   | 5 TV (EURO-AV)<br>Audio in<br>Video out<br>(without RGB) | 8 SPEAKER (CENTER) |
| 3 VIDEO 1 (EURO-AV)<br>Audio in/out<br>Video in/out<br>(without RGB) | 6 SURROUND MIX out                                       | 9 FRONT SPEAKERS   |
|  |  | 10 mains lead      |

**SDP-E300  
Remote (RM-PE300)**



- 1 LEARN indicator
- 2 VISUAL POWER button
- 3 TV/VIDEO button
- 4 Numeric buttons
- 5 BACK GROUND button
- 6 - / - - SHIFT button
- 7 SURROUND ON/OFF button
- 8 EFFECT +, - buttons
- 9 TEST TONE button
- 10 REAR LEVEL +, - buttons
- 11 SYSTEM OFF button
- 12 LEARN button
- 13 SYSTEM CONTROL/FUNCTION buttons
- 14 CH/PRESET + / - buttons
- 15 ENTER RMS/START button
- 16 CD, tape deck control buttons
- 17 SURROUND MODE buttons
- 18 BASS BOOST button
- 19 MASTER VOL +, - buttons
- 20 MUTING button
- 21 CENTER LEVEL +, - buttons

**TA-VE100  
Remote (RM-VE100)**



- 1 SURROUND ON/OFF button
- 2 TEST TONE button
- 3 REAR LEVEL buttons
- 4 BASS BOOST button
- 5 MUTING button
- 6 POWER OFF button
- 7 FUNCTION buttons
- 8 SURROUND MODE buttons
- 9 EFFECT +, - buttons
- 10 CENTER LEVEL +, - buttons
- 11 MASTER VOL +, - buttons

## SECTION 2 EXPLANATION OF IC TERMINALS

IC501  $\mu$  PD78001BGC-618

Pin No.	Pin name	I/O	Description
1	POW.RY	O	Power ON/OFF relay control terminal.
2	SP.RY	O	Speaker ON/OFF relay control terminal.
3	SUR.RY	O	Surround speaker ON/OFF relay control terminal.
4	VOL.UP	O	Volume up signal output.
5	VOL.DWN	O	Volume down signal output.
6	MUTE	O	Mute control terminal.
7	TV SCART	O	TV ON signal output. (TA-VE100)
8	NC	-	Not used.
9	VSS	-	Power supply terminal. (Ground)
10	NC	-	Not used.
11	DBFB	O	DBFB ON/OFF control terminal.
12	MUTE	O	MUTE LED ON/OFF control terminal.
13	LEV1	O	LEVEL LED ON/OFF control terminal.
14	LEV2	O	
15	LEV3	O	
16	LEV4	O	
17	LEV5	O	
18	$\overline{\text{SIMULATED}}$	O	SURROUND LED ON/OFF control terminal.
19	$\overline{\text{THEATER}}$	O	
20	$\overline{\text{PRO LOGIC}}$	O	
21	$\overline{\text{VIDEO1}}$	O	Video 1 LED ON/OFF control terminal.
22	$\overline{\text{TV}}$	O	TV LED ON/OFF control terminal.
23	$\overline{\text{VIDEO2}}$	O	Video 2 LED ON/OFF control terminal.
24	VSS	-	Power supply terminal. (Ground)
25	$\overline{\text{AUX/LINE}}$	O	AUX/LINE LED ON/OFF control terminal.
26	$\overline{\text{STANDBY}}$	O	POWER LED ON/OFF control terminal.
27	$\overline{\text{PHANTOM}}$	O	CENTER MODE LED ON/OFF control terminal.
28	$\overline{\text{3CH LOGIC}}$	O	
29	$\overline{\text{NORMAL}}$	O	
30	$\overline{\text{WIDE}}$	O	
31	INH1	O	Video 1 picture output loop cut control terminal.
32	V1	O	Loop cut control terminal for Video 1 image output.
33	V2	O	Loop cut control terminal for Video 2 image output.
34	INH2	O	Video 2 picture output loop cut control terminal.
35	$\overline{\text{RESET}}$	I	Reset input.
36	$\overline{\text{STOP}}$	I	Power break detection input terminal.
37	$\overline{\text{PROTECT}}$	I	Speaker output protection detection input.
38	SIRCS IN	I	Remote control receiver detection.
39	VIDEO SCART	I	Video1 input detect. (TA-VE100)
40	VDD	-	Power supply terminal. (+5V)

Pin No.	Pin name	I/O	Description
41	X1	—	System clock terminal. (10MHz)
42	X2	—	
43	ICO	—	Not used. (Ground)
44	XT2	—	Not used. (Open)
45	GND	—	Ground
46	IC1	—	Not used. (Ground)
47	KO1	O	Key matrix output.
48	KO2	O	
49	KO3	O	
50	KI1	I	Key matrix input.
51	KI2	I	
52	KI3	I	
53	KI4	I	
54	5043/5044	I	Model select.
55	IC2	—	VDD connection. (+5V)
56	IC3	—	Not used. (Ground)
57	P20	I	Not used.
58	P21	I	Not used.
59	7822.CE	O	Serial data output to audio function switch.
60	DATA	O	Serial data output to surround processor.
61	CLK	O	Serial clock output.
62	2785.CE	O	Data latch output to surround processor.
63	P26	—	Not used.
64	P.SW	I	Power switch ON/OFF detection.

● SEMICONDUCTOR LOCATION

Ref. No.	Location	Ref. No.	Location	Ref. No.	Location
D11	E - 15	D551	J - 6	Q354	G - 16
D12	I - 18	D552	J - 9	Q401	B - 27
D15	J - 17	D553	J - 8	Q402	D - 26
D101	D - 29	D554	J - 8	Q403	E - 20
D401	E - 20	D555	J - 7	Q404	E - 20
D402	E - 19	D556	J - 7	Q405	D - 19
D403	H - 20			Q406	E - 20
D404	G - 19			Q407	E - 20
D405	C - 27	IC201	C - 17	Q408	E - 19
D406	C - 27	IC202	F - 17	Q409	E - 19
D407	C - 27	IC203	G - 17	Q501	J - 2
D408	C - 27	IC204	C - 15	Q502	J - 2
D409	D - 27	IC301	I - 17	Q532	J - 9
D410	D - 27	IC302	F - 15	Q533	J - 9
D411	C - 24	IC331	I - 23	Q534	J - 9
D412	C - 21	IC402	F - 20	Q535	J - 7
D414	E - 19	IC403	F - 19	Q536	J - 7
D501	J - 2			Q537	I - 13
D502	H - 4	IC404	C - 26	Q538	I - 13
D504	I - 5	IC501	I - 3	Q551	J - 3
D505	J - 3	IC661	I - 27	Q701	D - 11
D506	I - 2	IC801	F - 23	Q702	D - 10
D532	J - 9			Q703	D - 10
D533	J - 8	IC851	D - 23	Q704	D - 10
D534	J - 8	IC901	C - 20	Q901	D - 20
D535	J - 7			Q902	C - 20
D536	J - 7			Q903	C - 20
D537	I - 14	Q11	E - 15	Q904	C - 19
D538	J - 14	Q12	J - 17	Q905	B - 18
D540	J - 11	Q13	I - 18	Q951	D - 19
D541	J - 10	Q14	I - 18		
D542	J - 10	Q15	G - 15	Q952	C - 19
D543	I - 7	Q16	G - 16		
D544	I - 5	Q301	I - 16		
D545	I - 9	Q302	I - 17		
D546	I - 11	Q303	I - 16		
D547	F - 3	Q304	E - 15		
D548	J - 5	Q351	J - 17		
D549	J - 6	Q352	J - 17		
D550	J - 6	Q353	I - 16		

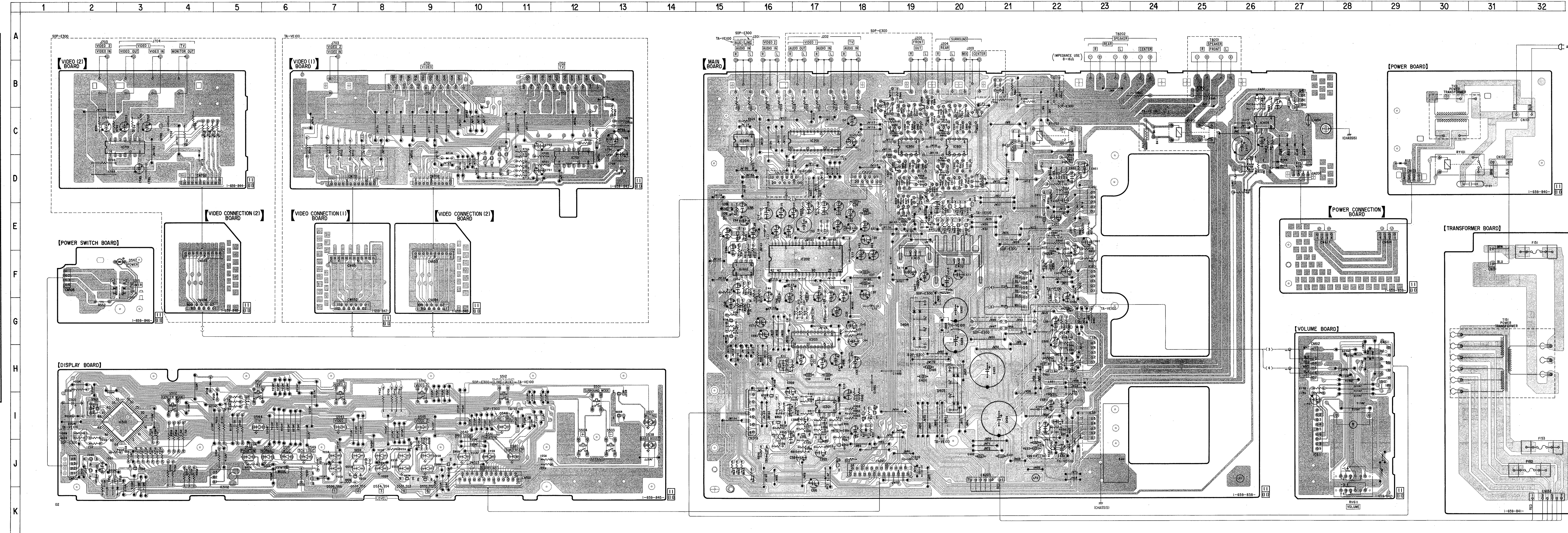
SDP-E300

Ref. No.	Location
D718	D - 4
IC701	C - 3
IC702	C - 3

TA-VE100

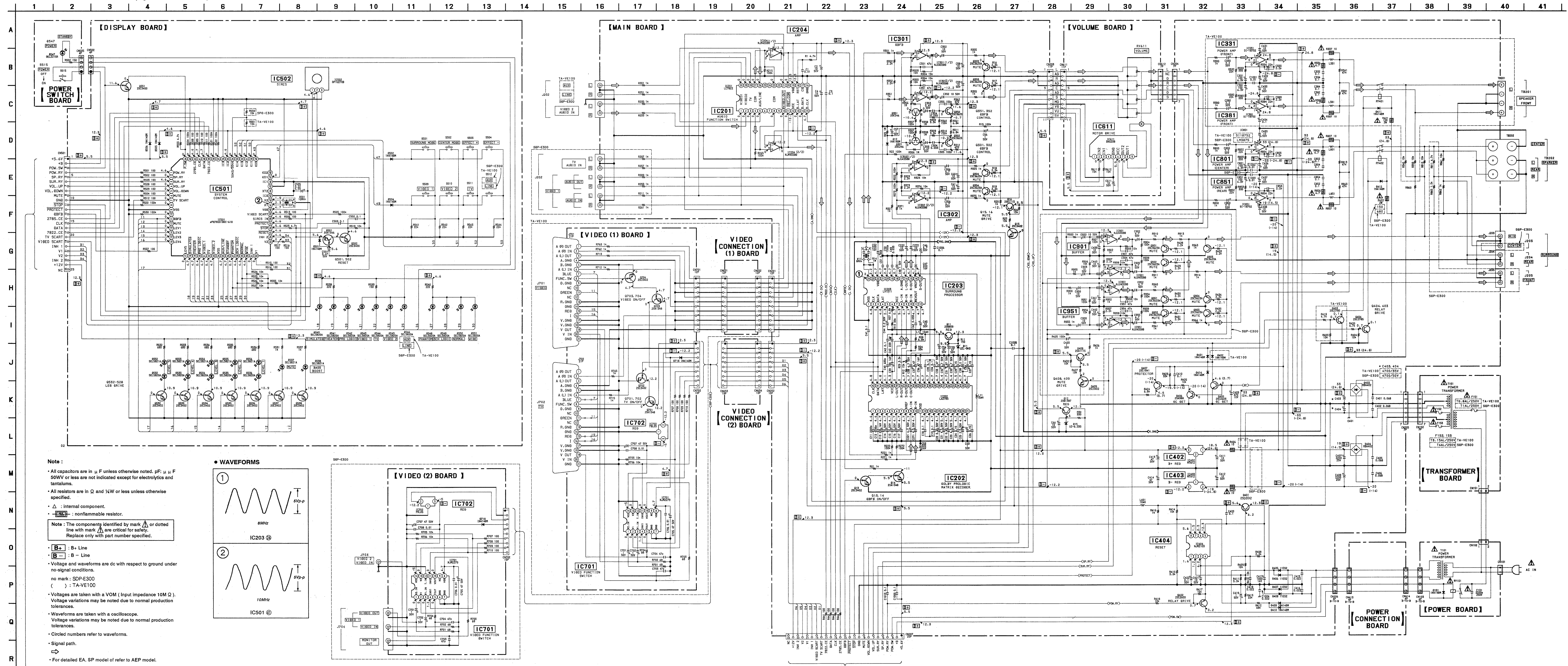
Ref. No.	Location
D718	D - 9
IC701	D - 12
IC702	D - 13

Note:  
 ○ : parts extracted from the component side.  
 ◐ : Pattern on the side which is seen.



3-2. SCHEMATIC DIAGRAM

Refer to page 18 for IC Block Diagrams.

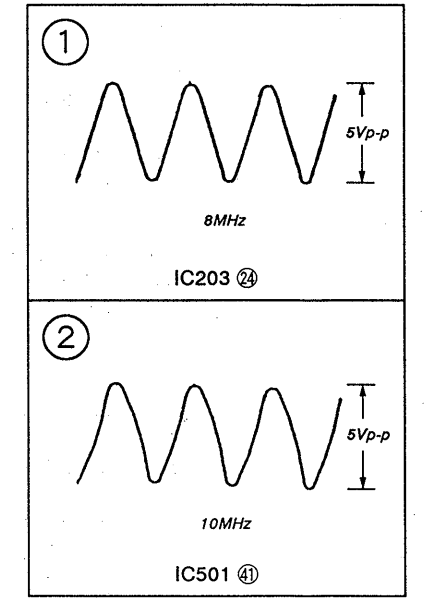


**Note :**

- All capacitors are in  $\mu$ F unless otherwise noted. pF:  $\mu$  F
- 50WV or less are not indicated except for electrolytics and tantalums.
- All resistors are in  $\Omega$  and  $\frac{1}{4}$ W or less unless otherwise specified.
- $\Delta$  : internal component.
- $\square$  : nonflammable resistor.

**Note :** The components identified by mark  $\Delta$  or dotted line with mark  $\Delta$  are critical for safety. Replace only with part number specified.

WAVEFORMS



- B+** : B+ Line
- B-** : B- Line

Voltage and waveforms are dc with respect to ground under no-signal conditions.  
no mark : SDP-E300  
( ) : TA-VE100

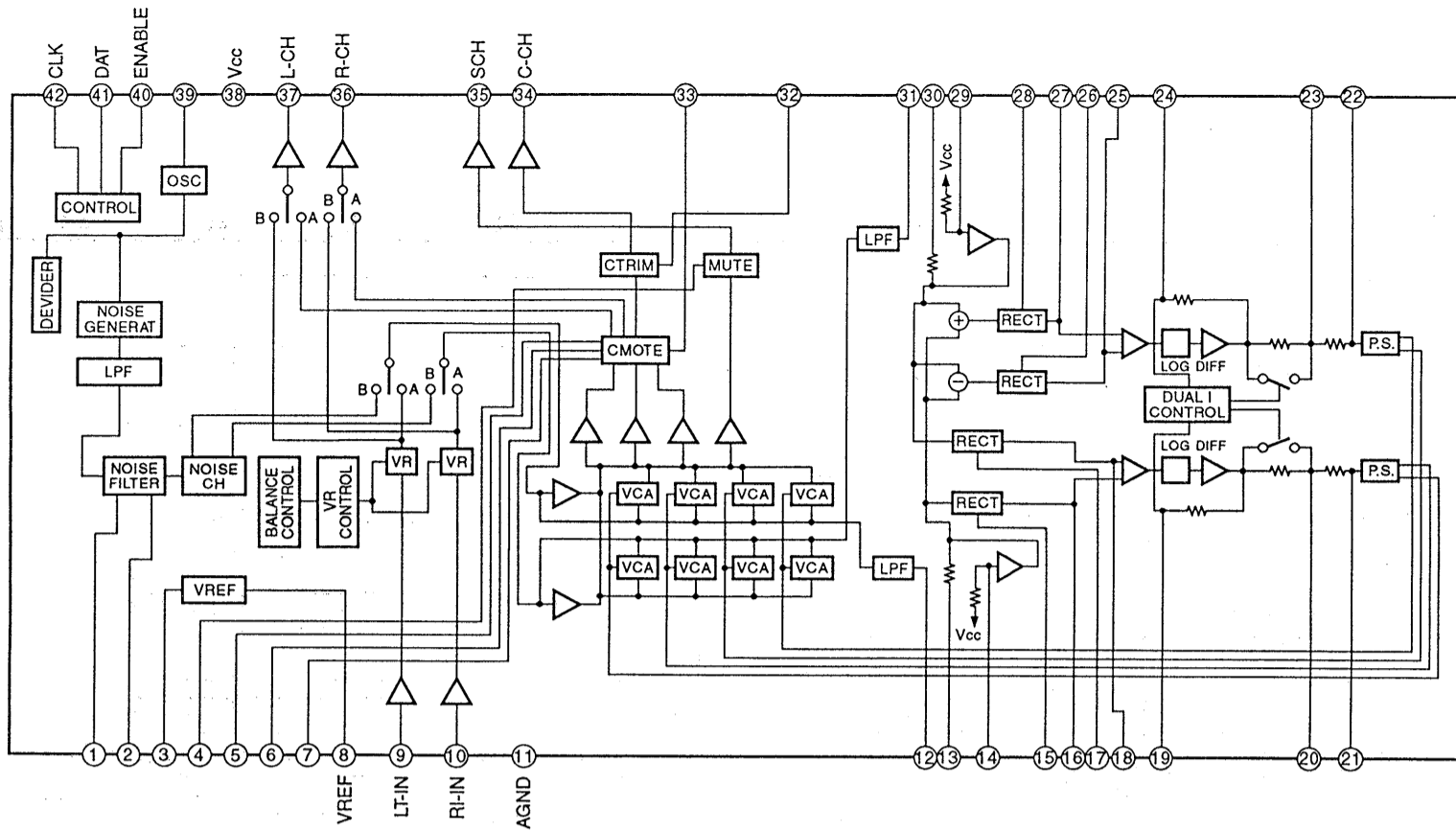
- Voltages are taken with a VOM ( Input impedance 10M  $\Omega$  ). Voltage variations may be noted due to normal production tolerances.
- Waveforms are taken with a oscilloscope. Voltage variations may be noted due to normal production tolerances.
- Circled numbers refer to waveforms.
- Signal path.

For detailed EA, SP model of refer to AEP model.

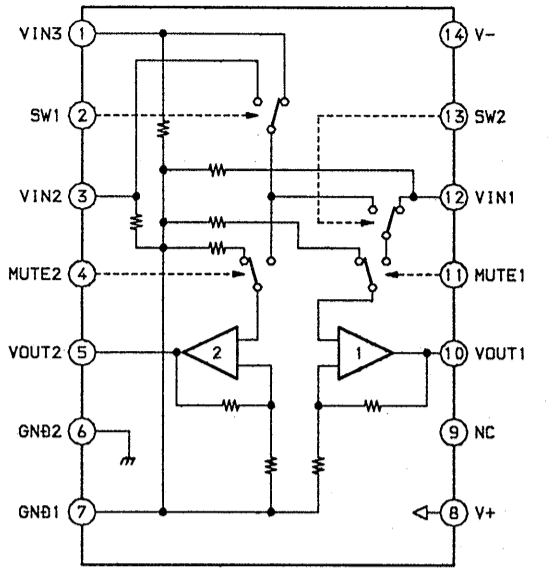


3-3. IC BLOCK DIAGRAMS

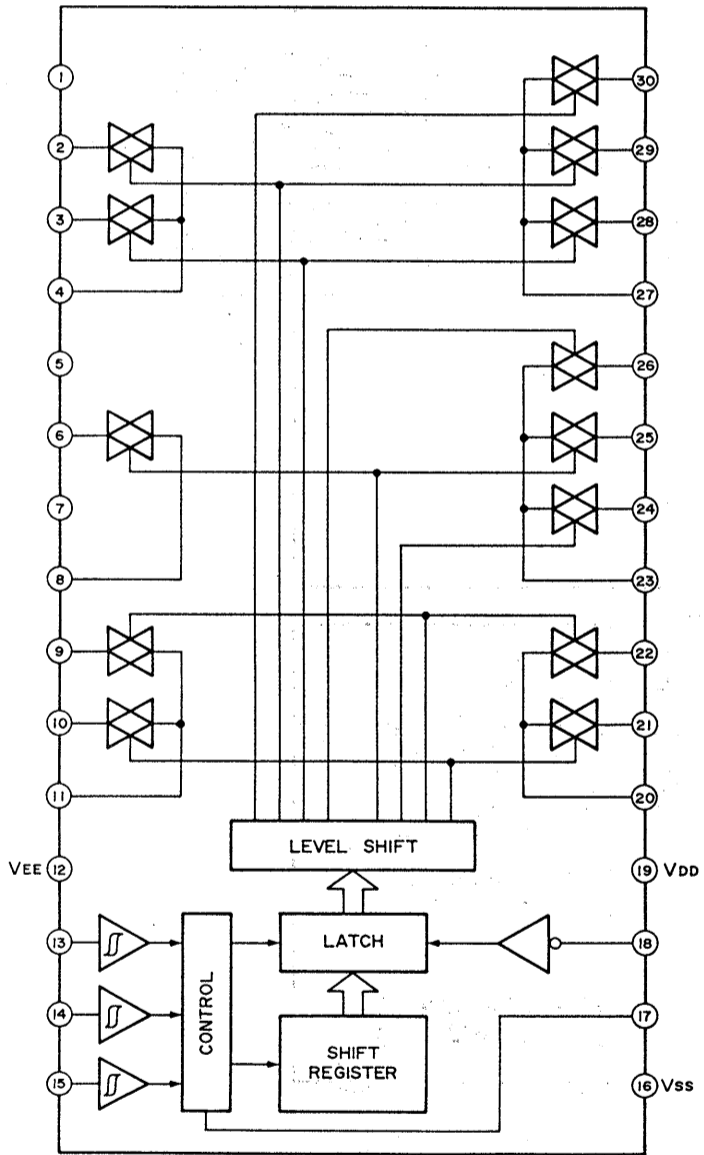
IC202 LA2785



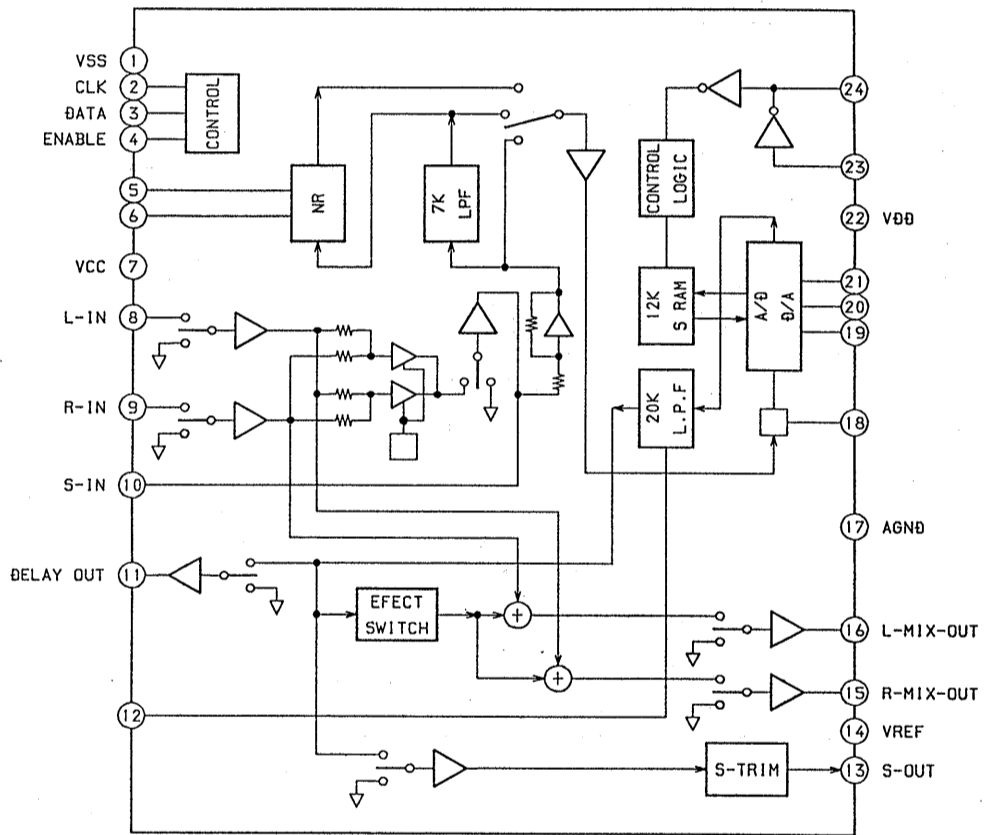
IC701 NJM2279



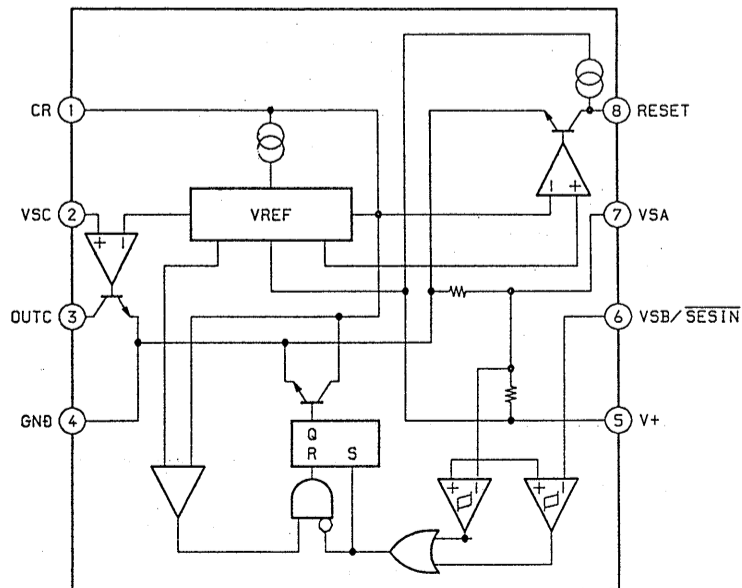
IC201 LC7822



IC203 LV1011



IC404 NJM2103



## SECTION 4 EXPLODED VIEWS

### NOTE :

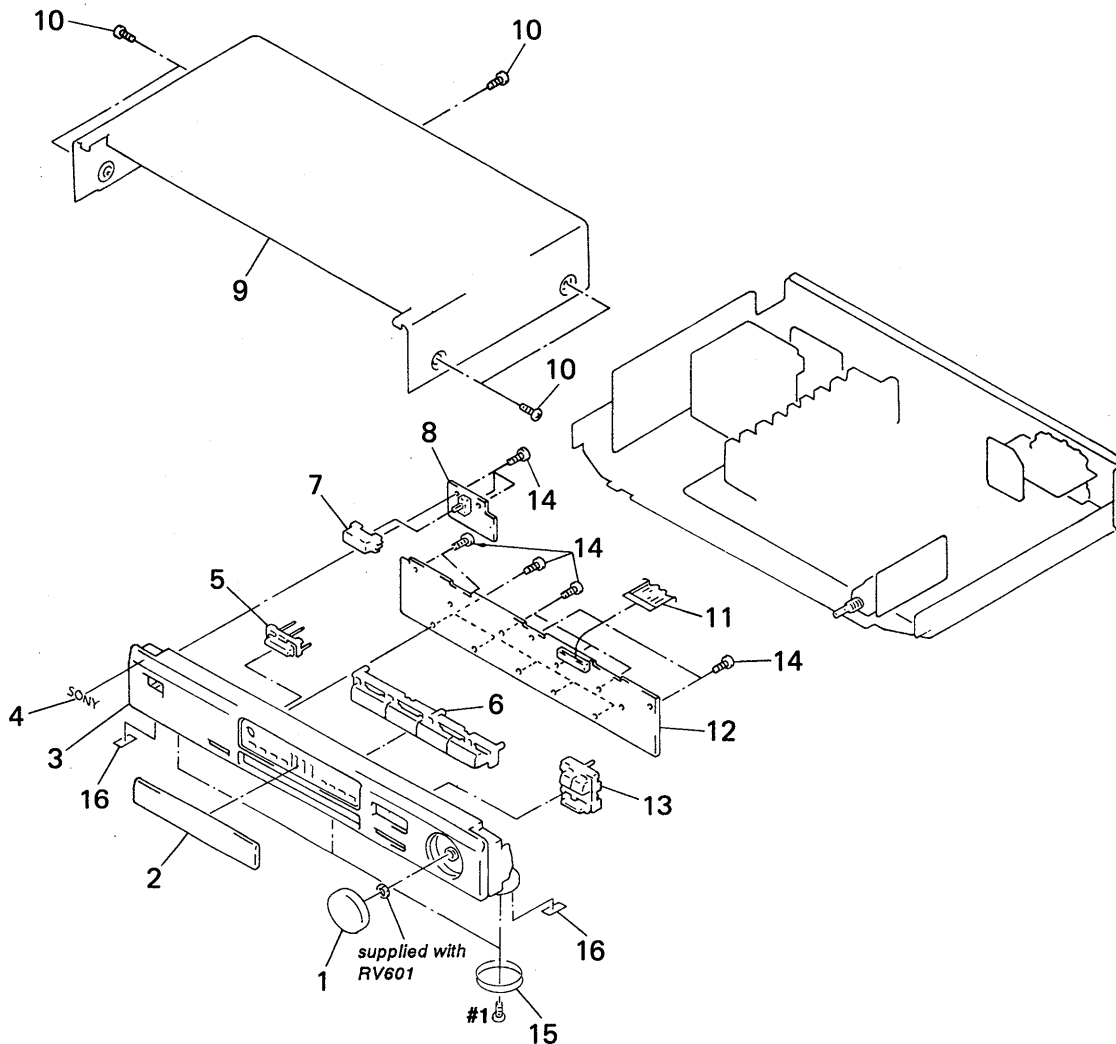
- -XX, -X mean standardized parts, so they may have some difference from the original one.
- Items marked " \* " are not stocked since they are seldom required for routine service. Some delay should be anticipated when ordering these items.

- The mechanical parts with no reference number in the exploded views are not supplied.
- Hardware (# mark) list and accessories and packing materials are given in the last of this parts list.
- Abbreviation  
AUS : Australian    G : German

The components identified by mark  $\Delta$  or dotted line with mark  $\Delta$  are critical for safety.  
Replace only with part number specified.

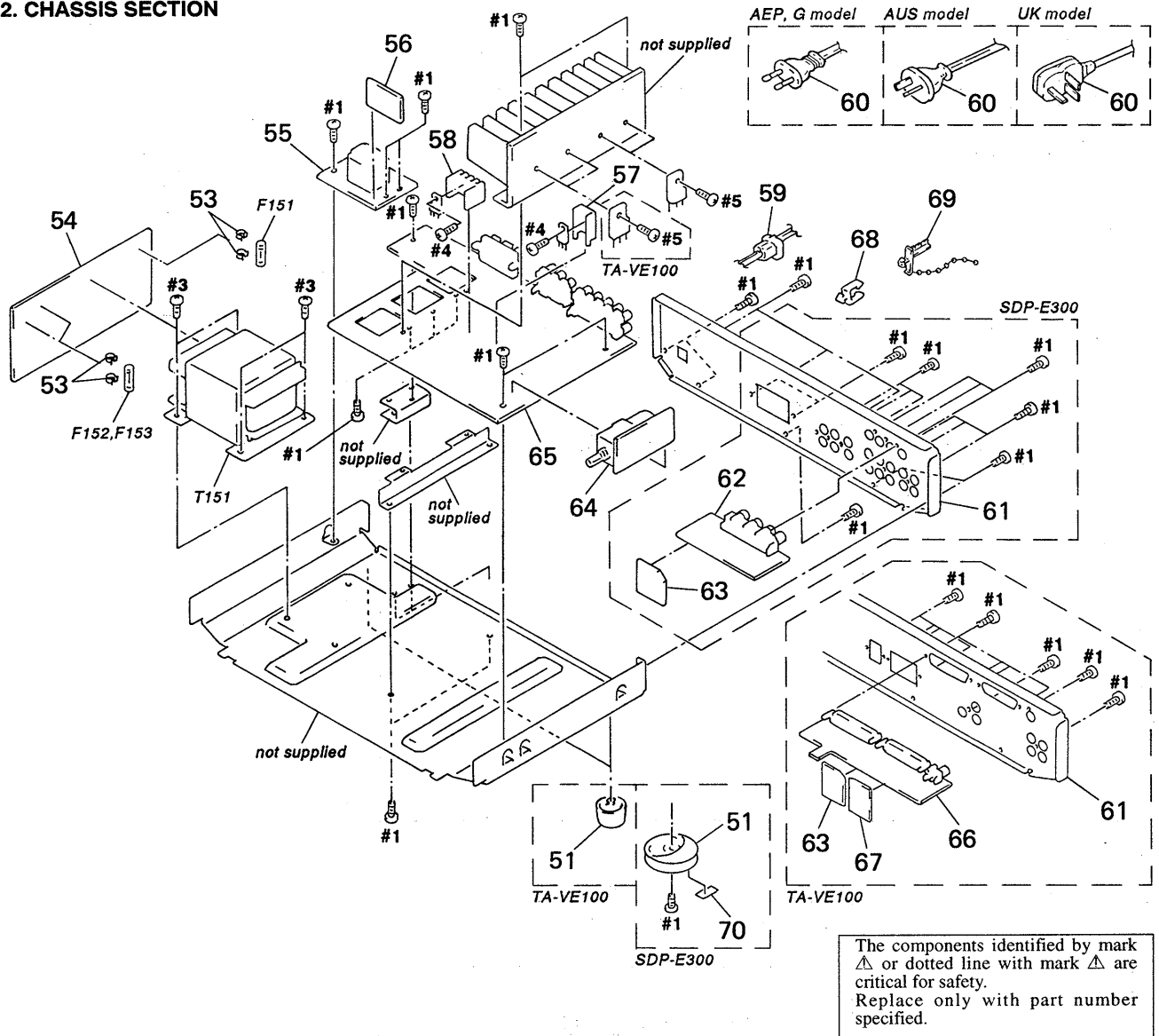
- For detailed EA, SP model of refer to AEP model.

### 4-1. FRONT PANEL SECTION



Ref. No.	Part No.	Description	Remark	Ref. No.	Part No.	Description	Remark
1	4-980-041-01	KNOB (VOL)		* 9	4-980-193-21	CASE (408226)	
2	4-980-035-01	WINDOW		10	3-704-366-01	SCREW (CASE) (M3X8)	
3	X-4946-757-1	PANEL ASSY, FRONT (TA-VE100)		11	1-773-215-11	WIRE (FLAT TYPE) (25 CORE)	
3	X-4946-758-1	PANEL ASSY, FRONT (SDP-E300)		* 12	A-4389-253-A	DISPLAY BOARD, COMPLETE (TA-VE100)	
4	4-963-404-21	EMBLEM (5-A), SONY		* 12	A-4389-259-A	DISPLAY BOARD, COMPLETE (SDP-E300)	
5	4-980-039-01	BUTTON (LEVEL)		13	4-980-038-01	BUTTON (SURROUND)	
6	4-980-040-01	BUTTON (FUNCTION) (TA-VE100)		14	4-951-620-01	SCREW (2.6X8), +BVTP	
6	4-980-040-11	BUTTON (FUNCTION) (SDP-E300)		15	4-977-593-01	RING (DIA. 50), ORNAMENTAL	
7	3-931-429-01	BUTTON (POWER)		16	4-981-397-01	CUSHION	
* 8	1-659-846-11	POWER SWITCH BOARD					

## 4-2. CHASSIS SECTION



Ref. No.	Part No.	Description	Remark	Ref. No.	Part No.	Description	Remark
51	X-3371-405-1	FOOT (SMALL) ASSY (TA-VE100)		* 63	1-659-848-11	VIDEO CONNECTION (2) BOARD	
51	X-4947-207-1	FOOT ASSY (F50150S) (SDP-E300)		* 64	1-659-842-11	VOLUME BOARD	
53	1-533-293-11	FUSE HOLDER		* 65	A-4389-247-A	MAIN BOARD, COMPLETE (TA-VE100)	
* 54	1-659-841-11	TRANSFORMER BOARD		* 65	A-4389-257-A	MAIN BOARD, COMPLETE (SDP-E300)	
* 55	1-659-840-11	POWER BOARD		* 66	1-659-843-11	VIDEO (1) BOARD (TA-VE100)	
* 56	1-659-839-11	POWER CONNECTION BOARD		* 67	1-659-847-11	VIDEO CONNECTION (1) BOARD (TA-VE100)	
* 57	3-309-144-21	HEAT SINK		* 68	3-681-263-11	SADDLE, WIRE	
* 58	4-880-403-11	HEAT SINK		69	4-956-370-02	BAND, PLUG FIXED (UK)	
* 59	3-703-244-00	BUSHING (2104), CORD		70	4-977-358-01	CUSHION (8X12.5) (SDP-E300)	
△ 60	1-696-845-11	CORD, POWER (AUS)		△ F151	1-532-078-00	FUSE, TIME LAG (T1A/250V) (SDP-E300)	
△ 60	1-776-060-11	CORD, POWER (AEP, G)		△ F151	1-532-215-00	FUSE, TIME LAG (T0.8A/250V) (TA-VE100)	
△ 60	1-776-061-11	CORD, POWER (UK)		△ F152	1-532-237-00	FUSE, TIME LAG (T3.15A/250V) (TA-VE100)	
* 61	4-980-044-01	PANEL, BACK (TA-VE100 : AEP, G)		△ F152	1-532-350-00	FUSE, TIME LAG (T4A/250V) (SDP-E300)	
* 61	4-980-044-11	PANEL, BACK (TA-VE100 : UK)		△ F153	1-532-237-00	FUSE, TIME LAG (T3.15A/250V) (TA-VE100)	
* 61	4-980-047-01	PANEL, BACK (SDP-E300 : AEP, G)		△ F153	1-532-350-00	FUSE, TIME LAG (T4A/250V) (SDP-E300)	
* 61	4-980-047-11	PANEL, BACK (SDP-E300 : UK)		△ T151	1-429-422-11	TRANSFORMER, POWER (TA-VE100)	
* 61	4-980-047-21	PANEL, BACK (SDP-E300 : AUS)		△ T151	1-429-423-11	TRANSFORMER, POWER (SDP-E300:AEP, UK, G)	
* 62	1-659-844-11	VIDEO (2) BOARD (SDP-E300)		△ T151	1-429-634-11	TRANSFORMER, POWER (SDP-E300 :AUS)	

# DISPLAY

## SECTION 5 ELECTRICAL PARTS LIST

### NOTE :

- Due to standardization, replacements in the parts list may be different from the parts specified in the diagrams or the components used on the set.
- -XX, -X mean standardized parts, so they may have some difference from the original one.
- RESISTORS  
All resistors are in ohms  
METAL : Metal-film resistor  
METAL OXIDE :Metal oxide-film resistor  
F : nonflammable
- Items marked " \* " are not stocked since they are seldom required for routine service. Some delay should be anticipated when ordering these items.

- SEMICONDUCTORS  
In each case, u :  $\mu$ , for example :  
uA..... :  $\mu$  A....., uPA..... :  $\mu$  PA.....  
uPB..... :  $\mu$  PB....., uPC..... :  $\mu$  PC.....  
uPD..... :  $\mu$  PD.....
- CAPACITORS  
uF :  $\mu$  F
- COILS  
uH :  $\mu$  H
- Abbreviation  
AUS : Australian G : German
- For detailed EA, SP model  
of refer to AEP model.

The components identified by mark  $\Delta$  or dotted line with mark  $\Delta$  are critical for safety.  
Replace only with part number specified.

When indicating parts by reference number, please include the board.

Ref. No.	Part No.	Description	Remark	Ref. No.	Part No.	Description	Remark
*	A-4389-253-A	DISPLAY BOARD, COMPLETE (TA-VE100)		D554	8-719-057-97	LED SEL5923A-TP15 (LEVEL3)	
*	A-4389-259-A	DISPLAY BOARD, COMPLETE (SDP-E300)		D555	8-719-057-97	LED SEL5923A-TP15 (LEVEL2)	
		*****		D556	8-719-057-97	LED SEL5923A-TP15 (LEVEL1)	
		< CAPACITOR >				< IC >	
C501	1-124-465-00	ELECT	0.47uF 20% 50V	IC501	8-759-398-63	IC uPD78001BGC-624-AB8	
C502	1-164-159-11	CERAMIC	0.1uF 50V	IC502	8-759-332-18	IC GP1U27XB	
C503	1-164-159-11	CERAMIC	0.1uF 50V			< TRANSISTOR >	
C505	1-125-486-11	DOUBLE LAYERS	0.22F 5.5V				
		< CONNECTOR >		Q501	8-729-900-63	TRANSISTOR DTA124ES	
* CN501	1-565-650-11	SOCKET, CONNECTOR 25P		Q502	8-729-900-36	TRANSISTOR DTC124ES	
CN502	1-562-087-00	SOCKET, CONNECTOR 4P		Q532	8-729-900-80	TRANSISTOR DTC114ES	
		< DIODE >		Q533	8-729-900-80	TRANSISTOR DTC114ES	
D501	8-719-987-63	DIODE 1N4148M		Q534	8-729-900-80	TRANSISTOR DTC114ES	
D502	8-719-987-63	DIODE 1N4148M		Q535	8-729-900-80	TRANSISTOR DTC114ES	
D504	8-719-987-63	DIODE 1N4148M		Q536	8-729-900-80	TRANSISTOR DTC114ES	
D505	8-719-987-63	DIODE 1N4148M		Q537	8-729-900-80	TRANSISTOR DTC114ES	
D506	8-719-987-63	DIODE 1N4148M		Q538	8-729-900-80	TRANSISTOR DTC114ES	
				Q551	8-729-900-36	TRANSISTOR DTC124ES	
D532	8-719-057-97	LED SEL5923A-TP15 (LEVEL,5)				< RESISTOR >	
D533	8-719-057-97	LED SEL5923A-TP15 (LEVEL,4)		R501	1-247-807-31	CARBON 100 5% 1/4W	
D534	8-719-057-97	LED SEL5923A-TP15 (LEVEL,3)		R502	1-247-807-31	CARBON 100 5% 1/4W	
D535	8-719-057-97	LED SEL5923A-TP15 (LEVEL,2)		R503	1-247-807-31	CARBON 100 5% 1/4W	
D536	8-719-057-97	LED SEL5923A-TP15 (LEVEL,1)		R504	1-247-807-31	CARBON 100 5% 1/4W	
				R505	1-249-441-11	CARBON 100K 5% 1/4W	
D537	8-719-057-97	LED SEL5923A-TP15 (MUTING)		R506	1-247-807-31	CARBON 100 5% 1/4W	
D538	8-719-057-97	LED SEL5923A-TP15 (BASS BOOST)		R507	1-247-807-31	CARBON 100 5% 1/4W	
D540	8-719-053-10	LED SEL2910A-D-TP6 (SIMULATED)		R508	1-247-807-31	CARBON 100 5% 1/4W	
D541	8-719-053-10	LED SEL2910A-D-TP6 (THEATER)		R509	1-247-807-31	CARBON 100 5% 1/4W	
D542	8-719-053-10	LED SEL2910A-D-TP6 (PRO LOGIC)		R510	1-247-807-31	CARBON 100 5% 1/4W	
D543	8-719-033-06	LED SEL5920A (VIDEO1)		R511	1-247-807-31	CARBON 100 5% 1/4W	
D544	8-719-033-06	LED SEL5920A (TV)		R512	1-247-807-31	CARBON 100 5% 1/4W	
D545	8-719-033-06	LED SEL5920A (VIDEO2)		R513	1-247-807-31	CARBON 100 5% 1/4W	
D546	8-719-033-06	LED SEL5920A (SDP-E300 : LINE)		R514	1-247-807-31	CARBON 100 5% 1/4W	
			(TA-VE100 : AUX)	R515	1-247-807-31	CARBON 100 5% 1/4W	
D548	8-719-053-10	LED SEL2910A-D-TP6 (PHANTOM)		R516	1-247-807-31	CARBON 100 5% 1/4W	
D549	8-719-053-10	LED SEL2910A-D-TP6 (3CH LOGIC)		R517	1-247-807-31	CARBON 100 5% 1/4W	
D550	8-719-053-10	LED SEL2910A-D-TP6 (NORMAL)		R518	1-249-429-11	CARBON 10K 5% 1/4W	
D551	8-719-053-10	LED SEL2910A-D-TP6 (WIDE)		R520	1-249-441-11	CARBON 100K 5% 1/4W	
D552	8-719-057-97	LED SEL5923A-TP15 (LEVEL5)		R521	1-249-441-11	CARBON 100K 5% 1/4W	
D553	8-719-057-97	LED SEL5923A-TP15 (LEVEL4)					

Ref. No.	Part No.	Description	Remark	Ref. No.	Part No.	Description	Remark
R522	1-249-441-11	CARBON	100K 5% 1/4W			< CAPACITOR >	
R523	1-249-425-11	CARBON	4.7K 5% 1/4W				
R524	1-249-429-11	CARBON	10K 5% 1/4W				
R525	1-249-429-11	CARBON	10K 5% 1/4W				
R526	1-249-429-11	CARBON	10K 5% 1/4W				
R527	1-249-429-11	CARBON	10K 5% 1/4W				
R528	1-247-807-31	CARBON	100 5% 1/4W				
R529	1-247-807-31	CARBON	100 5% 1/4W				
R530	1-249-441-11	CARBON	100K 5% 1/4W				
R531	1-249-417-11	CARBON	1K 5% 1/4W				
R532	1-249-415-11	CARBON	680 5% 1/4W				
R533	1-249-415-11	CARBON	680 5% 1/4W				
R534	1-249-415-11	CARBON	680 5% 1/4W				
R535	1-249-415-11	CARBON	680 5% 1/4W				
R536	1-249-415-11	CARBON	680 5% 1/4W				
R537	1-249-417-11	CARBON	1K 5% 1/4W				
R538	1-249-409-11	CARBON	220 5% 1/4W				
R539	1-249-407-11	CARBON	150 5% 1/4W				
R540	1-249-409-11	CARBON	220 5% 1/4W				
R541	1-249-433-11	CARBON	22K 5% 1/4W				
R542	1-249-433-11	CARBON	22K 5% 1/4W				
R543	1-249-433-11	CARBON	22K 5% 1/4W				
R544	1-249-433-11	CARBON	22K 5% 1/4W				
R550	1-249-429-11	CARBON	10K 5% 1/4W (SDP-E300)				
R551	1-249-429-11	CARBON	10K 5% 1/4W (TA-VE100)				
R553	1-249-425-11	CARBON	4.7K 5% 1/4W				
R554	1-249-441-11	CARBON	100K 5% 1/4W				
R555	1-249-429-11	CARBON	10K 5% 1/4W				
		< SWITCH >					
S501	1-554-303-21	SWITCH, TACTILE (SURROUND MODE)					
S502	1-554-303-21	SWITCH, TACTILE (CENTER MODE)					
S503	1-554-303-21	SWITCH, TACTILE (EFFECT -)					
S504	1-554-303-21	SWITCH, TACTILE (EFFECT +)					
S509	1-554-303-21	SWITCH, TACTILE (VIDEO1)					
S510	1-554-303-21	SWITCH, TACTILE (VIDEO2)					
S511	1-554-303-21	SWITCH, TACTILE (TV)					
S512	1-554-303-21	SWITCH, TACTILE (SDP-E300 : LINE, TA - VE100 : AUX)					
		< VIBRATOR >					
X501	1-579-175-11	VIBRATOR, CERAMIC (10MHz)					
*****							
*	A-4389-247-A	MAIN BOARD, COMPLETE (TA-VE100)					
*	A-4389-257-A	MAIN BOARD, COMPLETE (SDP-E300)					
*****							
*	3-309-144-21	HEAT SINK					
*	4-880-403-11	HEAT SINK					
	7-685-647-79	SCREW +BVTP 3X10 TYPE2 IT-3					
	7-682-548-04	SCREW +BVTT 3X8 (S)					
				C1	1-162-306-11	CERAMIC	0.01uF 30% 16V
				C2	1-126-964-11	ELECT	10uF 20% 50V
				C3	1-164-159-11	CERAMIC	0.1uF 50V
				C4	1-126-964-11	ELECT	10uF 20% 50V
				C11	1-162-302-11	CERAMIC	0.0022uF 30% 16V
				C12	1-162-600-11	CERAMIC	0.0047uF 30% 16V
				C13	1-126-934-11	ELECT	220uF 20% 16V
				C14	1-126-964-11	ELECT	10uF 20% 50V
				C15	1-126-964-11	ELECT	10uF 20% 50V
				C16	1-126-964-11	ELECT	10uF 20% 50V
				C17	1-126-964-11	ELECT	10uF 20% 50V
				C18	1-164-159-11	CERAMIC	0.1uF 50V
				C19	1-164-159-11	CERAMIC	0.1uF 50V
				C20	1-124-902-00	ELECT	0.47uF 20% 50V
				C21	1-126-963-11	ELECT	4.7uF 20% 50V
				C22	1-124-902-00	ELECT	0.47uF 20% 50V
				C23	1-126-963-11	ELECT	4.7uF 20% 50V
				C24	1-136-167-00	FILM	0.15uF 5% 50V
				C25	1-124-925-11	ELECT	2.2uF 20% 100V
				C26	1-136-167-00	FILM	0.15uF 5% 50V
				C27	1-136-167-00	FILM	0.15uF 5% 50V
				C28	1-124-925-11	ELECT	2.2uF 20% 100V
				C29	1-136-167-00	FILM	0.15uF 5% 50V
				C30	1-126-963-11	ELECT	4.7uF 20% 50V
				C31	1-124-902-00	ELECT	0.47uF 20% 50V
				C32	1-126-963-11	ELECT	4.7uF 20% 50V
				C33	1-124-902-00	ELECT	0.47uF 20% 50V
				C34	1-164-159-11	CERAMIC	0.1uF 50V
				C35	1-164-159-11	CERAMIC	0.1uF 50V
				C36	1-126-967-11	ELECT	47uF 20% 16V
				C37	1-136-173-00	FILM	0.47uF 5% 50V
				C38	1-126-963-11	ELECT	4.7uF 20% 50V
				C39	1-126-933-11	ELECT	100uF 20% 16V
				C40	1-137-363-91	FILM	680PF 5% 50V
				C41	1-164-159-11	CERAMIC	0.1uF 50V
				C42	1-164-159-11	CERAMIC	0.1uF 50V
				C43	1-126-934-11	ELECT	220uF 20% 16V
				C44	1-124-925-11	ELECT	2.2uF 20% 100V
				C45	1-126-964-11	ELECT	10uF 20% 50V
				C46	1-126-963-11	ELECT	4.7uF 20% 50V
				C47	1-126-934-11	ELECT	220uF 20% 16V
				C48	1-124-903-11	ELECT	1uF 20% 50V
				C49	1-136-159-00	FILM	0.033uF 5% 50V
				C50	1-130-473-00	MYLAR	0.0015uF 5% 50V
				C51	1-136-159-00	FILM	0.033uF 5% 50V
				C52	1-126-934-11	ELECT	220uF 20% 16V
				C53	1-126-934-11	ELECT	220uF 20% 16V
				C54	1-126-967-11	ELECT	47uF 20% 50V
				C55	1-126-967-11	ELECT	47uF 20% 50V

# MAIN

Ref. No.	Part No.	Description	Remark		Ref. No.	Part No.	Description	Remark	
C56	1-124-903-11	ELECT	1uF	20% 50V	C404	1-126-955-11	ELECT	4700uF	20% 35V (TA-VE100)
C57	1-124-903-11	ELECT	1uF	20% 50V	C405	1-137-375-11	FILM	0.068uF	5% 50V
C58	1-126-964-11	ELECT	10uF	20% 50V	C406	1-137-375-11	FILM	0.068uF	5% 50V
C59	1-126-964-11	ELECT	10uF	20% 50V	C407	1-126-943-11	ELECT	2200uF	20% 25V
C60	1-126-964-11	ELECT	10uF	20% 50V	C408	1-126-943-11	ELECT	2200uF	20% 25V
C61	1-126-964-11	ELECT	10uF	20% 50V	C409	1-126-925-11	ELECT	470uF	20% 10V
C62	1-136-159-00	FILM	0.033uF	5% 50V	C410	1-164-159-11	CERAMIC	0.1uF	50V
C63	1-124-903-11	ELECT	1uF	20% 50V	C411	1-126-964-11	ELECT	10uF	20% 50V
C64	1-124-903-11	ELECT	1uF	20% 50V	C412	1-126-964-11	ELECT	10uF	20% 50V
C66	1-126-964-11	ELECT	10uF	20% 50V	C413	1-126-967-11	ELECT	47uF	20% 50V
C221	1-126-963-11	ELECT	4.7uF	20% 50V	C414	1-126-967-11	ELECT	47uF	20% 50V
C222	1-126-964-11	ELECT	10uF	20% 50V	C415	1-161-494-00	CERAMIC	0.022uF	25V
C271	1-126-963-11	ELECT	4.7uF	20% 50V	C416	1-161-494-00	CERAMIC	0.022uF	25V
C272	1-126-964-11	ELECT	10uF	20% 50V	C417	1-126-952-11	ELECT	1000uF	20% 16V
C301	1-162-215-31	CERAMIC	47PF	5% 50V	C418	1-164-097-11	CERAMIC	0.022uF	50V
C302	1-126-964-11	ELECT	10uF	20% 50V	C419	1-124-903-11	ELECT	1uF	20% 50V
C303	1-124-902-00	ELECT	0.47uF	20% 50V	C420	1-164-159-11	CERAMIC	0.1uF	50V
C304	1-136-159-00	FILM	0.033uF	5% 50V	C421	1-126-964-11	ELECT	10uF	20% 50V
C305	1-162-282-31	CERAMIC	100PF	10% 50V	C422	1-126-956-91	ELECT	0.1uF	20% 50V
C306	1-126-963-11	ELECT	4.7uF	20% 50V	C423	1-124-903-11	ELECT	1uF	20% 50V (SDP-E300)
C330	1-124-925-11	ELECT	2.2uF	20% 100V (TA-VE100)	C431	1-126-964-11	ELECT	10uF	20% 50V (TA-VE100)
C331	1-126-933-11	ELECT	100uF	20% 10V (TA-VE100)	C432	1-126-964-11	ELECT	10uF	20% 50V (TA-VE100)
C332	1-136-165-00	FILM	0.1uF	5% 50V (TA-VE100)	C433	1-126-964-11	ELECT	10uF	20% 50V (TA-VE100)
C333	1-162-191-31	CERAMIC	2.2PF	10% 50V (TA-VE100)	C434	1-126-964-11	ELECT	10uF	20% 50V (TA-VE100)
C334	1-136-165-00	FILM	0.1uF	5% 50V (TA-VE100)	C435	1-126-964-11	ELECT	10uF	20% 50V
C351	1-162-215-31	CERAMIC	47PF	5% 50V	C436	1-126-964-11	ELECT	10uF	20% 50V
C352	1-126-964-11	ELECT	10uF	20% 50V	C437	1-126-964-11	ELECT	10uF	20% 50V
C353	1-124-902-00	ELECT	0.47uF	20% 50V	C438	1-126-964-11	ELECT	10uF	20% 50V
C354	1-136-159-00	FILM	0.033uF	5% 50V	C439	1-126-964-11	ELECT	10uF	20% 50V (SDP-E300)
C355	1-162-282-31	CERAMIC	100PF	10% 50V	C440	1-126-964-11	ELECT	10uF	20% 50V (SDP-E300)
C356	1-126-963-11	ELECT	4.7uF	20% 50V	C441	1-126-964-11	ELECT	10uF	20% 50V (SDP-E300)
C380	1-124-925-11	ELECT	2.2uF	20% 100V (TA-VE100)	C442	1-126-964-11	ELECT	10uF	20% 50V (SDP-E300)
C381	1-126-933-11	ELECT	100uF	20% 10V (TA-VE100)	C800	1-124-925-11	ELECT	2.2uF	20% 100V
C382	1-136-165-00	FILM	0.1uF	5% 50V (TA-VE100)	C801	1-126-933-11	ELECT	100uF	20% 10V
C383	1-162-191-31	CERAMIC	2.2PF	10% 50V (TA-VE100)	C802	1-136-165-00	FILM	0.1uF	5% 50V
C384	1-136-165-00	FILM	0.1uF	5% 50V (TA-VE100)	C803	1-162-191-31	CERAMIC	2.2PF	10% 50V
C401	1-137-375-11	FILM	0.068uF	5% 50V	C804	1-136-165-00	FILM	0.1uF	5% 50V
C402	1-137-375-11	FILM	0.068uF	5% 50V	C850	1-124-925-11	ELECT	2.2uF	20% 100V
C403	1-126-138-11	ELECT	4700uF	20% 50V (SDP-E300)	C851	1-126-933-11	ELECT	100uF	20% 10V
C403	1-126-955-11	ELECT	4700uF	20% 35V (TA-VE100)	C852	1-136-165-00	FILM	0.1uF	5% 50V
C404	1-126-138-11	ELECT	4700uF	20% 50V (SDP-E300)	C853	1-162-191-31	CERAMIC	2.2PF	10% 50V
					C854	1-136-165-00	FILM	0.1uF	5% 50V
					C900	1-126-964-11	ELECT	10uF	20% 50V (SDP-E300)

Ref. No.	Part No.	Description	Remark	Ref. No.	Part No.	Description	Remark
C901	1-162-215-31	CERAMIC	47PF 5% 50V (SDP-E300)	D410	8-719-987-63	DIODE 1N4148M	
C902	1-126-963-11	ELECT	4.7uF 20% 50V (SDP-E300)	D411	8-719-987-63	DIODE 1N4148M (TA - VE100)	
C903	1-126-964-11	ELECT	10uF 20% 50V (SDP-E300)	D412	8-719-987-63	DIODE 1N4148M	
C904	1-162-215-31	CERAMIC	47PF 5% 50V (SDP-E300)	D414	8-719-987-63	DIODE 1N4148M	
C905	1-126-963-11	ELECT	4.7uF 20% 50V (SDP-E300)			< PLATE, GROUND >	
C950	1-126-964-11	ELECT	10uF 20% 50V (SDP-E300)	* E401	4-962-200-01	PLATE (TR), GROUND	
C951	1-162-215-31	CERAMIC	47PF 5% 50V (SDP-E300)			< IC >	
C952	1-126-963-11	ELECT	4.7uF 20% 50V (SDP-E300)	IC201	8-759-805-14	IC LC7822	
C953	1-126-964-11	ELECT	10uF 20% 50V (SDP-E300)	IC202	8-759-248-74	IC LA2785	
C954	1-162-215-31	CERAMIC	47PF 5% 50V (SDP-E300)	IC203	8-759-341-23	IC LV1011	
C955	1-126-963-11	ELECT	4.7uF 20% 50V (SDP-E300)	IC204	8-759-634-51	IC M5218AP	
C1001	1-162-306-11	CERAMIC	0.01uF 30% 16V (TA-VE100)	IC301	8-759-634-51	IC M5218AP	
C1002	1-162-306-11	CERAMIC	0.01uF 30% 16V (SDP-E300)	IC302	8-759-634-51	IC M5218AP	
C1003	1-162-306-11	CERAMIC	0.01uF 30% 16V	IC331	8-759-502-33	IC SI18752 (TA - VE100)	
C1004	1-101-005-00	CERAMIC	22000PF 50V	IC381	8-759-502-33	IC SI18752 (TA - VE100)	
C1005	1-164-159-11	CERAMIC	0.1uF 50V	IC402	8-759-231-58	IC TA7812S	
C1006	1-164-159-11	CERAMIC	0.1uF 50V	IC403	8-759-245-86	IC TA7912S	
C1009	1-164-159-11	CERAMIC	0.1uF 50V	IC404	8-759-333-83	IC NJM2103D	
C1010	1-164-159-11	CERAMIC	0.1uF 50V	IC801	8-759-069-56	IC LM3875 - Q (SDP-E300)	
		< CONNECTOR >		IC801	8-759-502-33	IC SI18752 (TA-VE100)	
* CN201	1-695-821-11	CONNECTOR, BOARD TO BOARD 12P	(TA-VE100)	IC851	8-759-502-33	IC SI18752	
* CN202	1-750-196-11	CONNECTOR, BOARD TO BOARD 10P		IC901	8-759-634-51	IC M5218AP (SDP-E300)	
CN203	1-695-089-11	PIN, CONNECTOR (PC BOARD) 11P		IC951	8-759-634-51	IC M5218AP (SDP-E300)	
* CN206	1-565-495-11	CONNECTOR, BOARD TO BOARD 4P				< JACK >	
CN207	1-569-941-11	SOCKET, CONNECTOR 25P		J201	1-695-188-31	JACK, PIN 4P (LINE IN, VIDEO2 AUDIO IN)	(SDP-E300)
		< DIODE >		J201	1-695-188-31	JACK, PIN 4P (AUX IN, VIDEO2 AUDIO IN)	(TA-VE100)
D11	8-719-001-30	DIODE UZL-9H3		J202	1-770-015-11	JACK, PIN 6P (VIDEO1 AUDIO IN / OUT)	(SDP-E300)
D12	8-719-987-63	DIODE 1N4148M		J203	1-774-819-11	JACK, PIN 2P (CENTER, MIX OUT)	(SDP-E300)
D15	8-719-109-93	DIODE RD6.2ESB2		J203	1-774-785-11	JACK, PIN 1P (MIX OUT)	(TA-VE100)
D401	8-719-987-63	DIODE 1N4148M		J204	1-774-822-11	JACK, PIN 2P (REAR OUT)	
D402	8-719-987-63	DIODE 1N4148M (TA-VE100)		J205	1-774-822-11	JACK, PIN 2P (FRONT OUT)	(SDP- E300)
D403	8-719-025-03	DIODE RBA-402-SL				< COIL >	
D404	8-719-025-03	DIODE RBA-402-SL		L11	1-410-509-11	INDUCTOR 10uH	
D405	8-719-200-82	DIODE 11ES2		L12	1-410-509-11	INDUCTOR 10uH	
D406	8-719-200-82	DIODE 11ES2		L331	1-420-872-00	COIL, AIR-CORE (TA-VE100)	
D407	8-719-200-82	DIODE 11ES2		L381	1-420-872-00	COIL, AIR-CORE (TA-VE100)	
D408	8-719-200-82	DIODE 11ES2		L401	1-410-509-11	INDUCTOR 10uH	
D409	8-719-987-63	DIODE 1N4148M		L801	1-420-872-00	COIL, AIR-CORE	
				L851	1-420-872-00	COIL, AIR-CORE	
						< TRANSISTOR >	
				Q11	8-729-180-92	TRANSISTOR 2SD809-K	
				Q12	8-729-801-93	TRANSISTOR 2SD1387	
				Q13	8-729-900-80	TRANSISTOR DTC114ES	
				Q14	8-729-900-61	TRANSISTOR DTA114ES	

**MAIN**

Ref. No.	Part No.	Description	Remark
Q15	8-729-900-80	TRANSISTOR DTC114ES	
Q16	8-729-119-76	TRANSISTOR 2SA1175 - HFE	
Q301	8-729-202-67	FET 2SK246-GR3	
Q302	8-729-141-30	TRANSISTOR 2SC3623A - LK	
Q303	8-729-141-30	TRANSISTOR 2SC3623A - LK	
Q304	8-729-141-30	TRANSISTOR 2SC3623A - LK	
Q351	8-729-202-67	FET 2SK246 - GR3	
Q352	8-729-141-30	TRANSISTOR 2SC3623A - LK	
Q353	8-729-141-30	TRANSISTOR 2SC3623A - LK	
Q354	8-729-141-30	TRANSISTOR 2SC3623A - LK	
Q401	8-729-018-60	TRANSISTOR 2SD2012 - LC	
Q402	8-729-620-05	TRANSISTOR 2SC2603 - EF	
Q403	8-729-119-78	TRANSISTOR 2SC403SP - 51 (TA-VE100)	
Q404	8-729-119-78	TRANSISTOR 2SC403SP - 51	
Q405	8-729-620-05	TRANSISTOR 2SC2603 - EF	
Q406	8-729-140-82	TRANSISTOR 2SA988 - PAFAEA	
Q407	8-729-140-84	TRANSISTOR 2SC1841 - PAFAEA	
Q408	8-729-119-76	TRANSISTOR 2SA1175 - HFE (SDP-E300)	
Q409	8-729-900-80	TRANSISTOR DTC114ES (SDP-E300)	
Q901	8-729-141-30	TRANSISTOR 2SC3623A - LK (SDP-E300)	
Q902	8-729-141-30	TRANSISTOR 2SC3623A - LK (SDP-E300)	
Q903	8-729-141-30	TRANSISTOR 2SC3623A - LK (SDP-E300)	
Q904	8-729-141-30	TRANSISTOR 2SC3623A - LK (SDP-E300)	
Q905	8-729-141-30	TRANSISTOR 2SC3623A - LK (SDP-E300)	
Q951	8-729-141-30	TRANSISTOR 2SC3623A - LK (SDP-E300)	
Q952	8-729-141-30	TRANSISTOR 2SC3623A - LK (SDP-E300)	
< RESISTOR >			
R1	1-249-425-11	CARBON 4.7K	5% 1/4W
R11	1-249-407-11	CARBON 150	5% 1/4W
R12	1-249-431-11	CARBON 15K	5% 1/4W
R13	1-249-435-11	CARBON 33K	5% 1/4W
R14	1-247-903-00	CARBON 1M	5% 1/4W
R15	1-249-441-11	CARBON 100K	5% 1/4W
R16	1-249-421-11	CARBON 2.2K	5% 1/4W
R17	1-249-421-11	CARBON 2.2K	5% 1/4W
R18	1-249-421-11	CARBON 2.2K	5% 1/4W
R19	1-249-421-11	CARBON 2.2K	5% 1/4W
R20	1-249-417-11	CARBON 1K	5% 1/4W
R21	1-249-417-11	CARBON 1K	5% 1/4W
R22	1-249-441-11	CARBON 100K	5% 1/4W
R23	1-247-903-00	CARBON 1M	5% 1/4W
R24	1-249-435-11	CARBON 33K	5% 1/4W
R25	1-249-429-11	CARBON 10K	5% 1/4W
R26	1-249-429-11	CARBON 10K	5% 1/4W
R27	1-249-427-11	CARBON 6.8K	5% 1/4W
R28	1-249-427-11	CARBON 6.8K	5% 1/4W
R29	1-249-423-11	CARBON 3.3K	5% 1/4W
R30	1-249-411-11	CARBON 330	5% 1/4W
R201	1-249-417-11	CARBON 1K	5% 1/4W
R205	1-249-417-11	CARBON 1K	5% 1/4W
R207	1-249-417-11	CARBON 1K	5% 1/4W (SDP-E300)

Ref. No.	Part No.	Description	Remark
R209	1-249-417-11	CARBON 1K	5% 1/4W (SDP-E300)
R211	1-249-417-11	CARBON 1K	5% 1/4W (SDP-E300)
R215	1-249-441-11	CARBON 100K	5% 1/4W
R221	1-249-417-11	CARBON 1K	5% 1/4W
R222	1-249-441-11	CARBON 100K	5% 1/4W
R251	1-249-417-11	CARBON 1K	5% 1/4W
R255	1-249-417-11	CARBON 1K	5% 1/4W
R257	1-249-417-11	CARBON 1K	5% 1/4W (SDP-E300)
R259	1-249-417-11	CARBON 1K	5% 1/4W (SDP-E300)
R261	1-249-417-11	CARBON 1K	5% 1/4W (SDP-E300)
R265	1-249-441-11	CARBON 100K	5% 1/4W
R271	1-249-417-11	CARBON 1K	5% 1/4W
R272	1-249-441-11	CARBON 100K	5% 1/4W
R301	1-249-417-11	CARBON 1K	5% 1/4W
R302	1-249-421-11	CARBON 2.2K	5% 1/4W
R303	1-249-429-11	CARBON 10K	5% 1/4W
R304	1-249-431-11	CARBON 15K	5% 1/4W
R305	1-249-417-11	CARBON 1K	5% 1/4W
R306	1-247-903-00	CARBON 1M	5% 1/4W
R307	1-249-441-11	CARBON 100K	5% 1/4W
R308	1-247-903-00	CARBON 1M	5% 1/4W
R309	1-249-423-11	CARBON 3.3K	5% 1/4W
R310	1-247-883-00	CARBON 150K	5% 1/4W
R311	1-249-427-11	CARBON 6.8K	5% 1/4W
R312	1-249-413-11	CARBON 470	5% 1/4W
R321	1-249-417-11	CARBON 1K	5% 1/4W
R322	1-249-441-11	CARBON 100K	5% 1/4W (SDP-E300)
R323	1-249-421-11	CARBON 2.2K	5% 1/4W
R324	1-249-429-11	CARBON 10K	5% 1/4W
R325	1-249-417-11	CARBON 1K	5% 1/4W
R330	1-249-417-11	CARBON 1K	5% 1/4W (TA-VE100)
R332	1-249-433-11	CARBON 22K	5% 1/4W (TA-VE100)
R333	1-249-411-11	CARBON 330	5% 1/4W (TA-VE100)
R334	1-249-433-11	CARBON 22K	5% 1/4W (TA-VE100)
△ R336	1-249-389-11	CARBON 4.7	5% 1/4W F (TA-VE100)
△ R337	1-249-393-11	CARBON 10	5% 1/4W F (TA-VE100)
R340	1-249-429-11	CARBON 10K	5% 1/4W (TA-VE100)
R341	1-249-437-11	CARBON 47K	5% 1/4W (TA-VE100)
R351	1-249-417-11	CARBON 1K	5% 1/4W
R352	1-249-421-11	CARBON 2.2K	5% 1/4W

Les composants identifiés par une marque △ sont critiques pour la sécurité.  
Ne les remplacer que par une pièce portant le numéro spécifié.



Ref. No.	Part No.	Description	Remark
R353	1-249-429-11	CARBON	10K 5% 1/4W
R354	1-249-431-11	CARBON	15K 5% 1/4W
R355	1-249-417-11	CARBON	1K 5% 1/4W
R356	1-247-903-00	CARBON	1M 5% 1/4W
R357	1-249-441-11	CARBON	100K 5% 1/4W
R358	1-247-903-00	CARBON	1M 5% 1/4W
R359	1-249-423-11	CARBON	3.3K 5% 1/4W
R360	1-247-883-00	CARBON	150K 5% 1/4W
R361	1-249-427-11	CARBON	6.8K 5% 1/4W
R362	1-249-413-11	CARBON	470 5% 1/4W
R371	1-249-417-11	CARBON	1K 5% 1/4W
R372	1-249-441-11	CARBON	100K 5% 1/4W
R373	1-249-421-11	CARBON	2.2K 5% 1/4W
R374	1-249-429-11	CARBON	10K 5% 1/4W
R375	1-249-417-11	CARBON	1K 5% 1/4W
R380	1-249-417-11	CARBON	1K 5% 1/4W (TA-VE100)
R382	1-249-433-11	CARBON	22K 5% 1/4W (TA-VE100)
R383	1-249-411-11	CARBON	330 5% 1/4W (TA-VE100)
R384	1-249-433-11	CARBON	22K 5% 1/4W (TA-VE100)
△ R386	1-249-389-11	CARBON	4.7 5% 1/4W F (TA-VE100)
△ R387	1-249-393-11	CARBON	10 5% 1/4W F (TA-VE100)
R390	1-249-429-11	CARBON	10K 5% 1/4W (TA-VE100)
R391	1-249-437-11	CARBON	47K 5% 1/4W (TA-VE100)
R403	1-249-429-11	CARBON	10K 5% 1/4W (TA-VE100)
R404	1-249-429-11	CARBON	10K 5% 1/4W
R405	1-249-429-11	CARBON	10K 5% 1/4W
△ R406	1-249-393-11	CARBON	10 5% 1/4W F
△ R407	1-249-393-11	CARBON	10 5% 1/4W F
R408	1-249-421-11	CARBON	2.2K 5% 1/4W
R409	1-249-429-11	CARBON	10K 5% 1/4W
R410	1-249-429-11	CARBON	10K 5% 1/4W
R411	1-249-423-11	CARBON	3.3K 5% 1/4W
R412	1-249-439-11	CARBON	68K 5% 1/4W
R413	1-249-433-11	CARBON	22K 5% 1/4W
R414	1-249-429-11	CARBON	10K 5% 1/4W
R415	1-249-423-11	CARBON	3.3K 5% 1/4W
R416	1-249-417-11	CARBON	1K 5% 1/4W
R417	1-249-429-11	CARBON	10K 5% 1/4W
R418	1-249-429-11	CARBON	10K 5% 1/4W
R419	1-249-425-11	CARBON	4.7K 5% 1/4W (TA-VE100)
R420	1-249-425-11	CARBON	4.7K 5% 1/4W
△ R421	1-215-887-00	METAL OXIDE	150 5% 2W F (TA-VE100)

Ref. No.	Part No.	Description	Remark
△ R422	1-215-891-11	METAL OXIDE	680 5% 2W F (SDP-E300)
△ R422	1-215-887-00	METAL OXIDE	150 5% 2W F (TA-VE100)
R423	1-249-435-11	CARBON	33K 5% 1/4W
R424	1-249-427-11	CARBON	6.8K 5% 1/4W
R425	1-249-441-11	CARBON	100K 5% 1/4W (SDP-E300)
R426	1-249-417-11	CARBON	1K 5% 1/4W (SDP-E300)
R427	1-249-429-11	CARBON	10K 5% 1/4W (SDP-E300)
R428	1-249-421-11	CARBON	2.2K 5% 1/4W (SDP-E300)
R429	1-249-421-11	CARBON	2.2K 5% 1/4W (SDP-E300)
R430	1-249-421-11	CARBON	2.2K 5% 1/4W (SDP-E300)
R431	1-249-421-11	CARBON	2.2K 5% 1/4W (SDP-E300)
R432	1-249-429-11	CARBON	10K 5% 1/4W (SDP-E300)
R433	1-249-421-11	CARBON	2.2K 5% 1/4W (SDP-E300)
R434	1-249-421-11	CARBON	2.2K 5% 1/4W (SDP-E300)
R435	1-249-421-11	CARBON	2.2K 5% 1/4W (SDP-E300)
R441	1-247-807-31	CARBON	100 5% 1/4W
R442	1-247-807-31	CARBON	100 5% 1/4W
R443	1-247-807-31	CARBON	100 5% 1/4W
R444	1-247-807-31	CARBON	100 5% 1/4W
R800	1-249-417-11	CARBON	1K 5% 1/4W
R802	1-249-433-11	CARBON	22K 5% 1/4W
R803	1-249-411-11	CARBON	330 5% 1/4W
R804	1-249-433-11	CARBON	22K 5% 1/4W
△ R806	1-249-389-11	CARBON	4.7 5% 1/4W F
△ R807	1-249-393-11	CARBON	10 5% 1/4W F
R810	1-249-429-11	CARBON	10K 5% 1/4W
R811	1-249-425-11	CARBON	4.7K 5% 1/4W (SDP-E300)
R813	1-249-437-11	CARBON	47K 5% 1/4W
R850	1-249-417-11	CARBON	1K 5% 1/4W
R852	1-249-433-11	CARBON	22K 5% 1/4W
R853	1-249-411-11	CARBON	330 5% 1/4W
R854	1-249-433-11	CARBON	22K 5% 1/4W
△ R856	1-249-389-11	CARBON	4.7 5% 1/4W F
△ R857	1-249-393-11	CARBON	10 5% 1/4W F
R860	1-249-441-11	CARBON	100K 5% 1/4W (SDP-E300)
R860	1-249-417-11	CARBON	1K 5% 1/4W (TA-VE100)
R861	1-249-429-11	CARBON	10K 5% 1/4W
R862	1-249-417-11	CARBON	1K 5% 1/4W
R863	1-249-437-11	CARBON	47K 5% 1/4W

The components identified by mark △ or dotted line with mark △ are critical for safety. Replace only with part number specified.

**MAIN****POWER****POWER CONNECTION****POWER SWITCH**

Ref. No.	Part No.	Description	Remark
R865	1-249-419-11	CARBON	1.5K 5% 1/4W (SDP-E300)
R900	1-249-417-11	CARBON	1K 5% 1/4W (SDP-E300)
R901	1-249-441-11	CARBON	100K 5% 1/4W (SDP-E300)
R902	1-249-417-11	CARBON	1K 5% 1/4W (SDP-E300)
R903	1-249-429-11	CARBON	10K 5% 1/4W (SDP-E300)
R904	1-249-441-11	CARBON	100K 5% 1/4W (SDP-E300)
R905	1-249-417-11	CARBON	1K 5% 1/4W (SDP-E300)
R906	1-249-429-11	CARBON	10K 5% 1/4W (SDP-E300)
R907	1-249-421-11	CARBON	2.2K 5% 1/4W (SDP-E300)
R908	1-249-429-11	CARBON	10K 5% 1/4W (SDP-E300)
R909	1-249-441-11	CARBON	100K 5% 1/4W (SDP-E300)
R910	1-249-417-11	CARBON	1K 5% 1/4W (SDP-E300)
R911	1-249-417-11	CARBON	1K 5% 1/4W (SDP-E300)
R913	1-249-417-11	CARBON	1K 5% 1/4W (SDP-E300)
R914	1-249-417-11	CARBON	1K 5% 1/4W (SDP-E300)
R950	1-249-417-11	CARBON	1K 5% 1/4W (SDP-E300)
R951	1-249-441-11	CARBON	100K 5% 1/4W (SDP-E300)
R952	1-249-417-11	CARBON	1K 5% 1/4W (SDP-E300)
R953	1-249-429-11	CARBON	10K 5% 1/4W (SDP-E300)
R954	1-249-441-11	CARBON	100K 5% 1/4W (SDP-E300)
R955	1-249-417-11	CARBON	1K 5% 1/4W (SDP-E300)
R956	1-249-429-11	CARBON	10K 5% 1/4W (SDP-E300)
R957	1-249-421-11	CARBON	2.2K 5% 1/4W (SDP-E300)
R958	1-249-429-11	CARBON	10K 5% 1/4W (SDP-E300)
R959	1-249-441-11	CARBON	100K 5% 1/4W (SDP-E300)
R960	1-249-417-11	CARBON	1K 5% 1/4W (SDP-E300)
R961	1-249-417-11	CARBON	1K 5% 1/4W (SDP-E300)
R963	1-249-417-11	CARBON	1K 5% 1/4W (SDP-E300)
R964	1-249-417-11	CARBON	1K 5% 1/4W (SDP-E300)

Ref. No.	Part No.	Description	Remark
		< RELAY >	
RY401	1-515-920-11	RELAY (24V) (TA-VE100)	
RY402	1-515-920-11	RELAY (24V)	
		< TERMINAL >	
TB201	1-537-240-11	TERMINAL BOARD (CHECKER PIN) (FRONT SPEAKER) (TA-VE100)	
TB202	1-537-510-11	TERMINAL BOARD (SPEAKER) (6P) (REAR, CENTER SPEAKER)	
		< VIBRATOR >	
X11	1-579-952-21	VIBRATOR, CERAMIC (8MHz)	
*****			
*	1-659-840-11	POWER BOARD	*****
		< CAPACITOR >	
△ C101	1-113-920-11	ELECT	0.0022uF 20% 250V
		< CONNECTOR >	
CN101	1-580-230-11	PIN, CONNECTOR (PC BOARD) 2P	
CN102	1-564-321-00	PIN, CONNECTOR 2P	
* CN103	1-565-495-11	CONNECTOR, BOARD TO BOARD 4P	
		< DIODE >	
D101	8-719-987-63	DIODE 1N4148M	
		< RELAY >	
△ RY101	1-755-018-11	RELAY	
		< TRANSFORMER >	
△ T101	1-448-523-11	TRANSFORMER, POWER	
*****			
*	1-659-839-11	POWER CONNECTION BOARD	*****
		< CONNECTOR >	
* CN613	1-565-480-11	CONNECTOR, BOARD TO BOARD 4P	
* CN614	1-565-480-11	CONNECTOR, BOARD TO BOARD 4P	
*****			
*	1-659-846-11	POWER SWITCH BOARD	*****
		< CONNECTOR >	
* CN505	1-506-509-11	PIN, CONNECTOR 4P	
		< DIODE >	
D547	8-719-028-38	LED SEL2215R-CD-TP (POWER)	

The components identified by mark △ or dotted line with mark △ are critical for safety. Replace only with part number specified.

**POWER SWITCH**

**TRANSFORMER**

**VIDEO (1)**

**VIDEO (2)**

Ref. No.	Part No.	Description	Remark		
		< RESISTOR >			
R552	1-249-407-11	CARBON	150	5%	1/4W
		< SWITCH >			
S515	1-554-118-00	SWITCH, PUSH (1 KEY) (POWER)			
*****					
*	1-659-841-11	TRANSFORMER BOARD			
		*****			
	1-533-293-11	FUSE HOLDER			
		< CONNECTOR >			
CN152	1-691-768-11	PLUG (MICRO CONNECTOR) 6P			
		< FUSE >			
△ F151	1-532-078-00	FUSE, TIME LAG (T1A/250V) (SDP-E300)			
△ F151	1-532-215-00	FUSE, TIME LAG (T0.8A/250V) (TA-VE100)			
△ F152	1-532-237-00	FUSE, TIME LAG (T3.15A/250V) (TA-VE100)			
△ F152	1-532-350-00	FUSE, TIME LAG (T4A/250V) (SDP-E300)			
△ F153	1-532-237-00	FUSE, TIME LAG (T3.15A/250V) (TA-VE100)			
△ F153	1-532-350-00	FUSE, TIME LAG (T4A/250V) (SDP-E300)			
*****					
*	1-659-843-11	VIDEO (1) BOARD (TA-VE100)			
		*****			
		< CAPACITOR >			
C701	1-124-903-11	ELECT	1uF	20%	50V
C702	1-124-903-11	ELECT	1uF	20%	50V
C703	1-162-215-31	CERAMIC	47PF	5%	50V
C704	1-162-215-31	CERAMIC	47PF	5%	50V
C705	1-126-967-11	ELECT	47uF	20%	50V
C706	1-162-306-11	CERAMIC	0.01uF	30%	16V
C707	1-126-967-11	ELECT	47uF	20%	50V
C708	1-162-306-11	CERAMIC	0.01uF	30%	16V
		< CONNECTOR >			
CN701	1-573-826-11	CONNECTOR, BOARD TO BOARD 12P			
CN702	1-568-702-11	SOCKET, CONNECTOR 10P			
		< DIODE >			
D718	8-719-987-63	DIODE 1N4148M			
		< IC >			
IC701	8-759-333-84	IC NJM2279D			
IC702	8-759-700-65	IC NJM79L05A			
		< JACK >			
J701	1-561-534-00	SOCKET, PIN 21P (VIDEO)			
J702	1-561-534-00	SOCKET, PIN 21P (TV)			

Ref. No.	Part No.	Description	Remark		
J703	1-774-227-11	JACK, PIN 1P (VIDEO2, VIDEO IN)			
		< TRANSISTOR >			
Q701	8-729-900-61	TRANSISTOR	DTA114ES		
Q702	8-729-900-80	TRANSISTOR	DTC114ES		
Q703	8-729-900-61	TRANSISTOR	DTA114ES		
Q704	8-729-900-80	TRANSISTOR	DTC114ES		
		< RESISTOR >			
R701	1-249-403-11	CARBON	68	5%	1/4W
R702	1-249-403-11	CARBON	68	5%	1/4W
R703	1-249-403-11	CARBON	68	5%	1/4W
R704	1-249-403-11	CARBON	68	5%	1/4W
R705	1-249-429-11	CARBON	10K	5%	1/4W
R706	1-249-429-11	CARBON	10K	5%	1/4W
R707	1-247-807-31	CARBON	100	5%	1/4W
R708	1-247-807-31	CARBON	100	5%	1/4W
R709	1-247-807-31	CARBON	100	5%	1/4W
R710	1-247-807-31	CARBON	100	5%	1/4W
R712	1-249-417-11	CARBON	1K	5%	1/4W
R713	1-249-417-11	CARBON	1K	5%	1/4W
R715	1-249-417-11	CARBON	1K	5%	1/4W
R762	1-249-417-11	CARBON	1K	5%	1/4W
R763	1-249-417-11	CARBON	1K	5%	1/4W
R765	1-249-417-11	CARBON	1K	5%	1/4W
*****					
*	1-659-844-11	VIDEO (2) BOARD (SDP-E300)			
		*****			
		< CAPACITOR >			
C701	1-124-903-11	ELECT	1uF	20%	50V
C702	1-124-903-11	ELECT	1uF	20%	50V
C703	1-162-215-31	CERAMIC	47PF	5%	50V
C704	1-162-215-31	CERAMIC	47PF	5%	50V
C705	1-126-967-11	ELECT	47uF	20%	50V
C706	1-162-306-11	CERAMIC	0.01uF	30%	16V
C707	1-126-967-11	ELECT	47uF	20%	50V
C708	1-162-306-11	CERAMIC	0.01uF	30%	16V
		< CONNECTOR >			
CN702	1-568-702-11	SOCKET, CONNECTOR 10P			
		< DIODE >			
D718	8-719-987-63	DIODE 1N4148M			
		< IC >			
IC701	8-759-333-84	IC NJM2279D			
IC702	8-759-700-65	IC NJM79L05A			

The components identified by mark △ or dotted line with mark △ are critical for safety. Replace only with part number specified.

## VIDEO (2)

## VIDEO CONNECTION (1)

## VIDEO CONNECTION (2)

## VOLUME

Ref. No.	Part No.	Description	Remark
		< JACK >	
J703	1-774-227-11	JACK, PIN 1P (VIDEO2, VIDEO IN)	
J704	1-774-821-11	JACK, PIN 3P (VIDEO1, VIDEO IN / OUT, MONITOR OUT)	
		< RESISTOR >	
R701	1-249-403-11	CARBON	68 5% 1/4W
R702	1-249-403-11	CARBON	68 5% 1/4W
R703	1-249-403-11	CARBON	68 5% 1/4W
R704	1-249-403-11	CARBON	68 5% 1/4W
R705	1-249-429-11	CARBON	10K 5% 1/4W
R706	1-249-429-11	CARBON	10K 5% 1/4W
R707	1-247-807-31	CARBON	100 5% 1/4W
R708	1-247-807-31	CARBON	100 5% 1/4W
R709	1-247-807-31	CARBON	100 5% 1/4W
R710	1-247-807-31	CARBON	100 5% 1/4W
*****			
*	1-659-847-11	VIDEO CONNECTION (1) BOARD (TA-VE100)	*****
		< CONNECTOR >	
CN651	1-573-844-11	CONNECTOR, BOARD TO BOARD 12P	
* CN652	1-695-820-11	CONNECTOR, BOARD TO BOARD 12P	
*****			
*	1-659-848-11	VIDEO CONNECTION (2) BOARD	*****
		< CONNECTOR >	
* CN653	1-568-704-11	PIN, CONNECTOR 10P	
CN654	1-750-187-11	CONNECTOR, BOARD TO BOARD 10P	
*****			
*	1-659-842-11	VOLUME BOARD	*****
		< CAPACITOR >	
C611	1-126-964-11	ELECT	10uF 20% 50V
		< CONNECTOR >	
CN611	1-695-094-11	SOCKET, CONNECTOR 11P	
CN612	1-691-768-11	PLUG (MICRO CONNECTOR) 6P	
		< IC >	
IC611	8-759-962-08	IC BA6208	
		< RESISTOR >	
R611	1-249-429-11	CARBON	10K 5% 1/4W
R612	1-249-429-11	CARBON	10K 5% 1/4W

Ref. No.	Part No.	Description	Remark
		< VARIABLE RESISTOR >	
RV611	1-225-183-11	RES, VAR, CARBON 100KX4 (VOLUME)	
*****			
		MISCELLANEOUS	*****
11	1-773-215-11	WIRE (FLAT TYPE) (25 CORE)	
53	1-533-293-11	FUSE HOLDER	
△ 60	1-696-845-11	CORD, POWER (AUS)	
△ 60	1-776-060-11	CORD, POWER (AEP,G)	
△ 60	1-776-061-11	CORD, POWER (UK)	
△ F151	1-532-078-00	FUSE, TIME LAG (T1A/250V) (SDP-E300)	
△ F151	1-532-215-00	FUSE, TIME LAG (T0.8A/250V) (TA-VE100)	
△ F152	1-532-237-00	FUSE, TIME LAG (T3.15A/250V) (TA-VE100)	
△ F152	1-532-350-00	FUSE, TIME LAG (T4A/250V) (SDP-E300)	
△ F153	1-532-237-00	FUSE, TIME LAG (T3.15A/250V) (TA-VE100)	
△ F153	1-532-350-00	FUSE, TIME LAG (T4A/250V) (SDP-E300)	
△ T151	1-429-422-11	TRANSFORMER, POWER (TA-VE100)	
△ T151	1-429-423-11	TRANSFORMER, POWER (SDP-E300:AEP, UK, G)	
△ T151	1-429-634-11	TRANSFORMER, POWER (SDP-E300:AUS)	
*****			
		ACCESSORIES & PACKING MATERIALS	*****
	1-473-556-11	REMOTE COMMANDER (RM-VE100)	(TA-VE100)
	1-473-557-11	REMOTE COMMANDER (RM-PE300)	(SDP-E300)
	3-810-849-11	MANUAL, INSTRUCTION (ENGLISH, FRENCH, SPANISH, PORTUGUESE)	(TA-VE100 : AEP, UK)
	3-810-849-21	MANUAL, INSTRUCTION (GERMAN, DUTCH, SWEDISH, ITALIAN)	(TA-VE100 : AEP, G)
	3-810-850-11	MANUAL, INSTRUCTION (ENGLISH, FRENCH, SPANISH, PORTUGUESE)	(SDP-E300 : AEP, UK, AUS)
	3-810-850-21	MANUAL, INSTRUCTION (GERMAN, DUTCH, SWEDISH, ITALIAN)	(SDP-E300:AEP,G)
*	4-981-424-01	CUSHION (VE)	
*	4-981-425-01	INDIVIDUAL CARTON (TA-VE100)	
*	4-981-425-11	INDIVIDUAL CARTON (SDP-E300)	
	4-981-643-01	COVER, BATTERY (RM-VE100)	(TA-VE100)
	4-983-537-01	COVER, BATTERY (RM-PE300)	(SDP-E300)
*****			
		HARDWARE LIST	*****
#1	7-685-646-79	SCREW +BVTP-3X8 TYPE2 N-S	
#3	7-682-560-04	SCREW +BVTT 4X6 (S)	
#4	7-682-548-04	SCREW +BVTT 3X8 (S)	
#5	7-685-647-79	SCREW +BVTP 3X10 TYPE2 IT-3	

The components identified by mark  
△ or dotted line with mark △ are  
critical for safety.  
Replace only with part number  
specified.

**Sony Corporation**  
Consumer A&V Products Company  
Home A&V Products Div.

English  
96B0276-1  
Printed in Japan  
© 1996.2  
Published by Home A&V Products Div.  
Quality Engineering Dept.